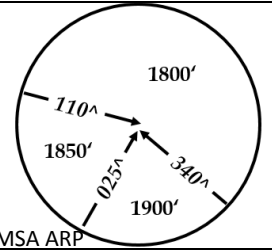
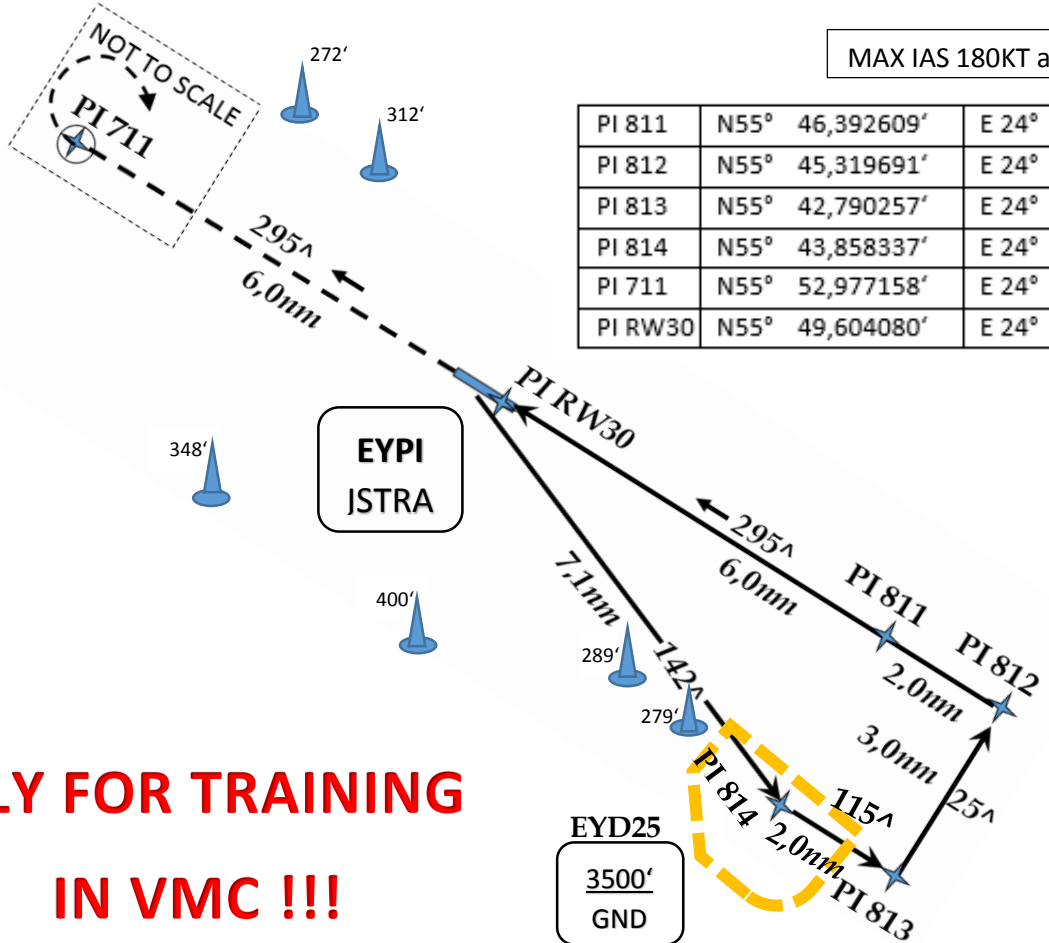


ATIS 129,050 120,750		KAUNAS ŠIAULIAI	ŠIAULIAI INFO 120,4		JSTRA RADIO 123,2
RNAV	Final Apch Crs 295 [^]	Procedure Alt PI811 2200'(2040')	LNAV DA(H) 660'(500')	Apt Elev 164' Rwy 164'	
MISSED APCH CLIMB on 295 [^] to PI 711 up to 1900', then turn RIGHT (MAX 180 KT), direct to EYPI climbing to 2500'					
Alt Set: hPa		Rwy Elev: 6 hPa	Trans level: By ATC		Trans alt: 5000'



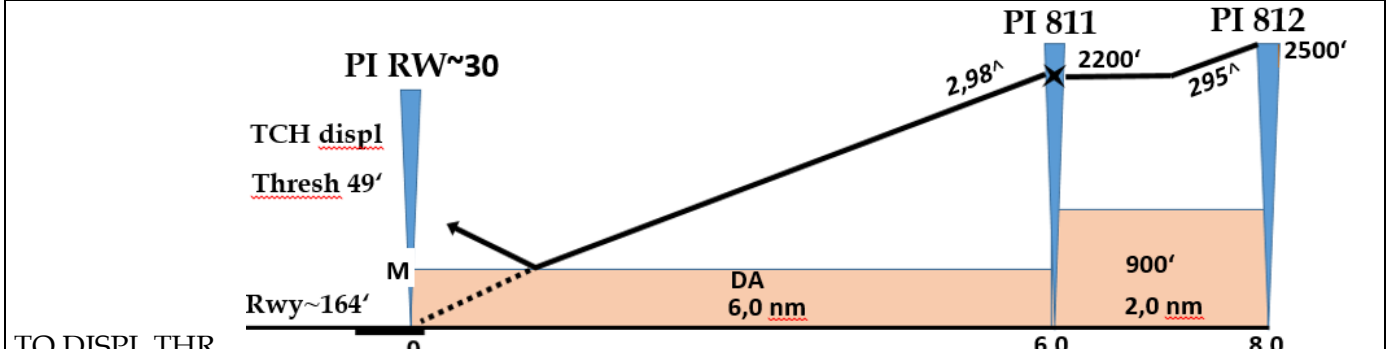
MAX IAS 180KT at all IAFs.

PI 811	N55°	46,392609'	E 24°	30,641727'
PI 812	N55°	45,319691'	E 24°	33,627224'
PI 813	N55°	42,790257'	E 24°	30,787697'
PI 814	N55°	43,858337'	E 24°	27,799965'
PI 711	N55°	52,977158'	E 24°	12,196797'
PI RW30	N55°	49,604080'	E 24°	21,668835'



**ONLY FOR TRAINING
IN VMC !!!**

DIST to RW-30	5.0 nm	4.0 nm	3.0 nm	2.0 nm
ALTITUDE	1807'	1487'	1167'	847'



Gnd speed-Kts	70	90	100	120	140	160
Descent angle	2,98 [^]	369'	474'	527'	633'	738'

Standart	STRAIGHT-IN LANDING RW 30 DA(H) 660'(500')					
A	VIS 1500m					